



IUEC INCIDENT SUMMARY

CLOSE CALLS & INJURIES

INJURY

FEBRUARY 26, 2025



Description of Incident

Control Type: Microprocessor

Machine Type: Traction MRL

Work Type: Construction

Speed: 200 ft/min, Capacity: 3,000 lbs

Rise: 6 Floors

Hoistway Configuration: Duplex

JHA/JSA Completed: Yes

-
- Two mechanics and a probationary apprentice were stacking counterweights into the counterweight frame using a lifting magnet
 - As one of the counterweights was being set into place, the magnet failed, and the counterweight dropped, pinching the probationary apprentice's hand against the counterweight frame
 - The probationary apprentice suffered a badly broken pinky finger

Current Status:

The probationary apprentice will require surgery on his pinky finger before returning to work

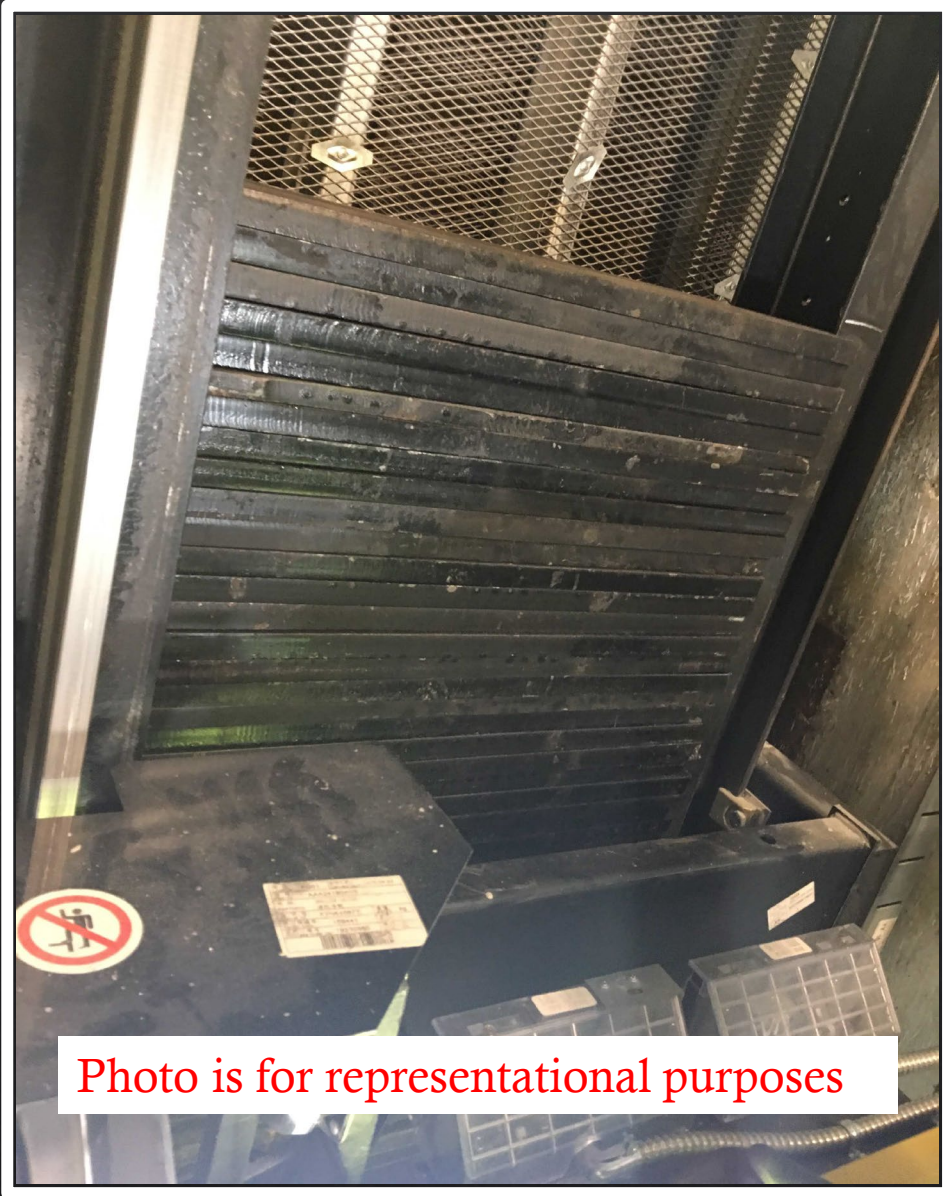


Photo is for representational purposes



Recommendations & Lessons Learned

- Always follow the company safety policy
- Always perform a JHA/JSA as per company policy

Possible Root Cause:

- Rigging plans must consider action plans due to equipment failure

Field Employees' Safety Handbook

Section 1 General Safety

1.2 Additional Safety Responsibilities of the Mechanic/MIC

(a) Determine that their Apprentice(s)/Helper(s) fully understand the safety requirements and that they accept responsibility for the safety of themselves, their fellow workers, the jobsite, and equipment.

Section 12 Material Handling

12.3 Hoisting and Rigging

(a) The cardinal rules of hoisting are: stay clear of the load at all times, never stand under the load, know the weight of the load, capacity of your equipment, the structure to which you are rigging and the overall condition of these items. Stand uphill or to the side of a load that's on a ramp.

