



IUEC INCIDENT SUMMARY

CLOSE CALLS & INJURIES

INJURY

FEBRUARY 26, 2024



Description of Incident

Control Type: Electric

Machine Type: Traction

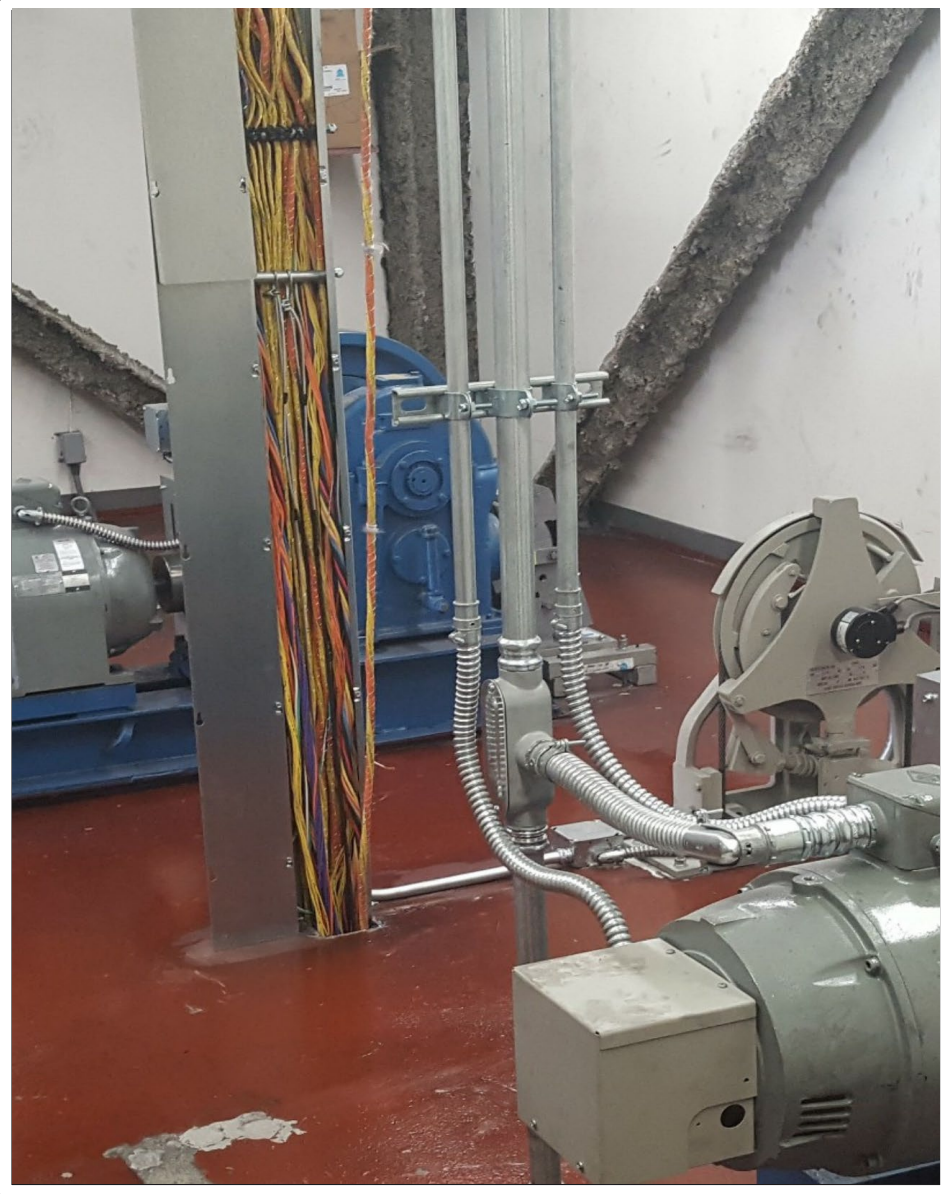
Speed: 350 ft/min

Capacity: 3,500 lbs.

Rise: 10 Floors

Hoistway Configuration: Duplex

JHA/JSA Completed: No



- A team consisting of a mechanic and an apprentice were working on a modernization job. The apprentice was working in the machine room removing a knockout in the wireway.
- He hit the plug one time with a hammer and screwdriver. It bent enough so he could put a screwdriver in the gap. Using the screwdriver, he tried to twist the plug and break it off the wireway.
- The screwdriver slipped and his hand caught the duct cutting through his glove and his finger.

Current Status:

The apprentice received stitches in his right middle finger and returned to work on light duty.



Recommendations & Lessons Learned

- Always follow the company safety policy
- Always perform a JHA/JSA as per company policy

Possible Root Cause:

- Incorrect tool for the job

Field Employees' Safety Handbook
3.7 Hand Protection (Gloves)

(a) Gloves shall be worn when potential hazards exist that could cause injuries to the hands, (i.e.: cuts; abrasions; burns; hazardous chemical exposure; etc.).

