



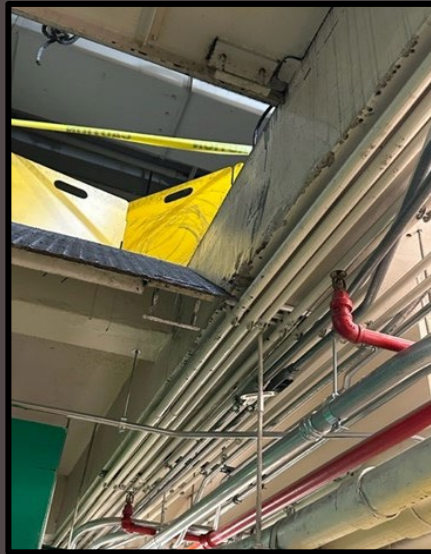
# IUEC INCIDENT SUMMARY

CLOSE CALLS & INJURIES

“INJURY”

AUGUST 29, 2023

April 28<sup>th</sup> 2024 --- IUEC Safety Stand Down Day



# Description of Incident

Control Type: Electric

Machine Type: Gearless

Speed: 1,400 ft/min

Capacity: 4,000 lbs.

Rise: 40 Stops

Hoistway Configuration: 6 Car Bank



- A mechanic and an apprentice were working on a modernization job installing a lifeline anchor plate in the ceiling of the machine room.
- The lifeline anchor plate is rated for 5,000 lbs.
- As the mechanic walked across a trap door in the machine room to access his equipment, the trap door released, and he fell 12 feet to the floor below. He landed on a machine end bell that was secured to a cart beneath the trap door.

## Current Status:

The Mechanic was taken to the hospital for X-Rays and a CT scan, and the results were negative. He suffered some bruising and took the rest of the week off.

As a result of this incident, the building checked all trap doors in every machine room for safe and secure operation.



# Recommendations & Lessons Learned

- Always follow the company safety policy.
- Always perform a JHA/JSA per company policy.

Possible Root Cause:

The mechanic stated there are 2 sections of the trap door, the smaller door rests on the lip of the big door and there were no welded supports on the small door only on the bottom of the big door.

29 CFR 1926 OSHA Construction Industry Regulations & Standards

29 CFR 1910 OSHA – General Industry Regulations & Standards

1926.501 Duty To Have Fall Protection

1910.28 Duty to have fall protection and falling object protection

1926.501 (b)(4) Holes

1910.28(b)(3) Holes: The employer must ensure:

1910.28(b)(3)(v) Each employee is protected from falling through a hatchway and chute-hole by:

1910.28(b)(3)(v)(a) A hinged hole cover that meets the criteria in 1910.29 and a fixed guardrail system that leaves only one exposed side. When the hole is not in use, the employer must ensure that the cover is closed or a removeable guardrail system is provided on the exposed sides.

