



IUEC INCIDENT SUMMARY

CLOSE CALLS & INJURIES

CLOSE CALL

MARCH 21, 2023



Description of Incident

Control Type: Electric

Machine Type: Traction

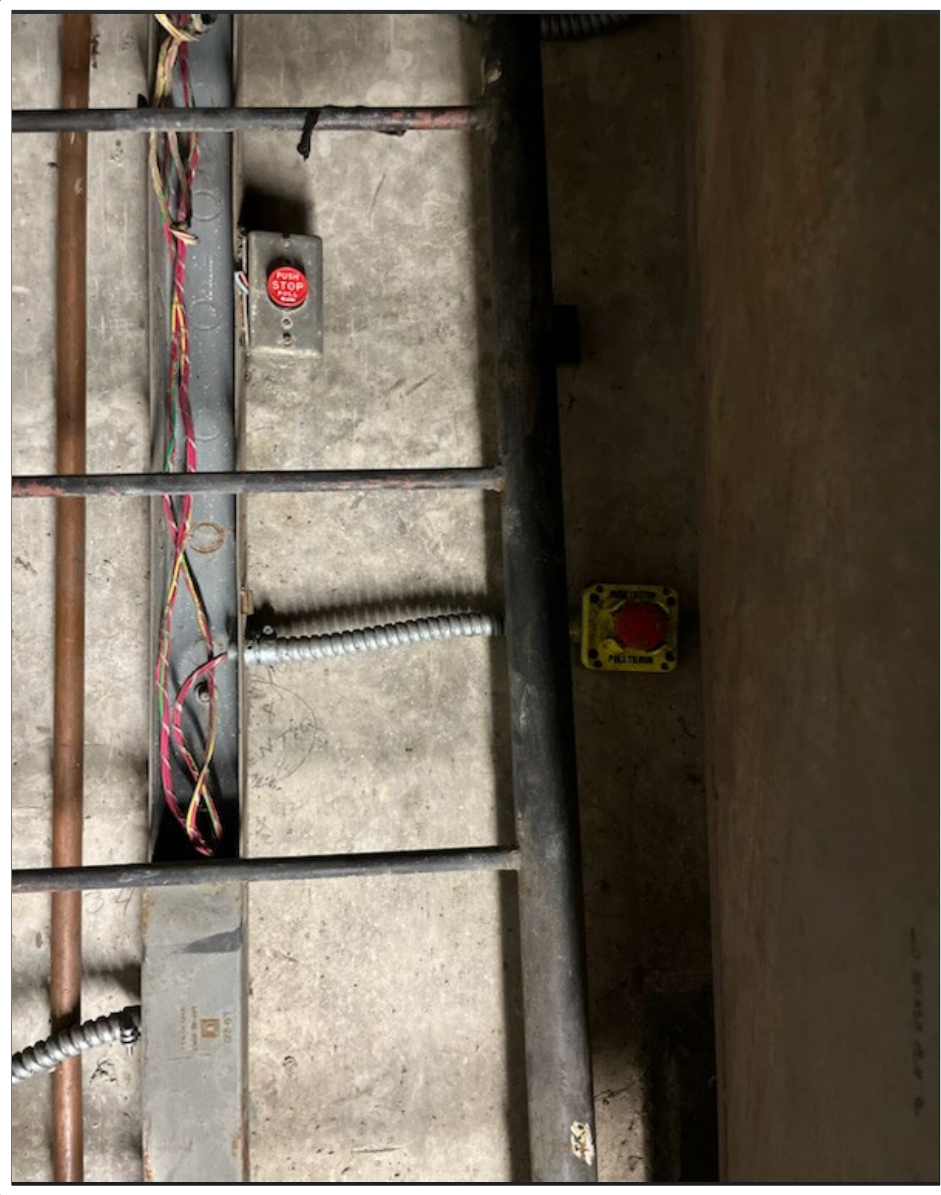
Speed: 500 ft/min

Capacity: Unknown

Rise: 3 Floors

Hoistway Configuration: Simplex

JHA/JSA Completed: Yes



- A mechanic was responding to a call after regular working hours and needed to access a pit to retrieve a lost item. Following the hoistway access procedure, the mechanic activated the pit stop switch.
- While confirming the functionality of the stop switch, the mechanic closed the doors and the elevator unexpectedly ascended
- Observing safety protocols, the mechanic performed the LOTO procedure before investigating further
- The mechanic discovered that during a previous modernization by a different company the new stop switch had been installed adjacent to the old one. When the hoistway doors were open the new stop switch was not visible. A closer examination by the mechanic revealed that the inactive stop switch had its wires cut rendering it inoperative.

Current Status:

Once the necessary repairs and testing were completed the elevator was returned to service.



Recommendations & Lessons Learned

- Always follow the company safety policy
- Always perform a JHA/JSA as per company policy

Possible Root Causes:

- Incomplete modernization; failure to remove unused equipment
- Insufficient testing procedures after the modernization was completed
- Inadequate inspection before being placed into service

Field Employees' Safety Handbook

8.2 Pit Safety

8.2.2 Elevator Pit Access/Egress Procedure

(l) Standing outside the hoistway, remove door wedge tool and close the hoistway door. Enter a hall call and wait 10 seconds to verify the elevator will not run and to verify that the pit stop switch is working. When working on a multiple bank of elevators wait for a minimum of 20 seconds to verify the elevator you are working on will not run.

ASME A17.1/CSA B44 Elevator Code

Section 8.10 Acceptance Inspections and Tests

When an electrical protective device is changed as part of an alteration it must be tested (8.10.2.3.2(nn)).

